

Ecosite Elements

The Modern Art of Composite.





From the
makers of
Luxatemp and
LuxaCore Z

Wonder- fully simple

Discover the modern art of composite
with Ecosite Elements.

With the innovative NC1 material structure,
an intelligent shade selection and
exceptional handling.

Intuitive, esthetic and reliable.

Precisely engineered and absolutely practical.

For superb results. Every day.

- 98 % of all typical treatments
with just one material
- Intuitive and straightforward shade concept
- Exceptional handling for
maximum safety and precision

Ecosite Elements

Simply masterful results.

Ecosite Elements will impress you with perfect results in all areas of application.
Simple, flexible, efficient.

BEFORE



Dr. Ali Salehi, France; Tooth 46 + 47.



Dr. Shiraz Khan, UK; Tooth 16.



Erik-Jan Muts, Netherlands; Tooth 36 + 37.



Max-Richard Seidemmann, Germany; Tooth 11 + 21.

AFTER



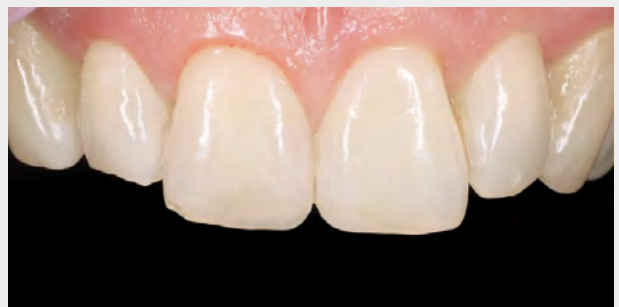
Result with Pure A3



Result with Pure A2 + Highlight B (Brown)



Result with Pure A3.5 + Layer EM (Enamel Medium) + Highlight B (Brown)



Result with Pure A3 + Layer EM (Enamel Medium)

Intelligent shade system

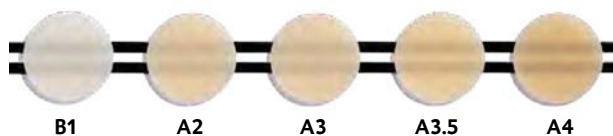
Precisely engineered.

Experience the art of making established solutions even better – Ecosite Elements, with its intuitive shade concept, has everything you need for impressive results. Its secret is the intelligent shade combination using a maximum of three modules. It enables naturally esthetic restorations with any working technique. Intuitive, absolutely practical and at the same time surprisingly efficient.

A maximum variety of combinations and especially speedy polishing – the shades, divided up into three modules, are easy to combine to create superb results. Depending on the requirements, you can quickly find exactly what you need for your work in the anterior and posterior regions. And thanks to the thin layer of our Highlight shades, you can easily replicate the individual character of each tooth. For natural, convincing restorations.

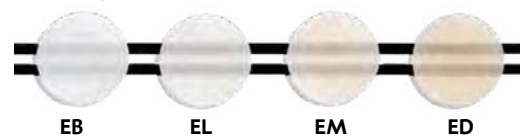
PURE: Five VITA shades

Pure shades as a natural-looking substitute for dentin or enamel



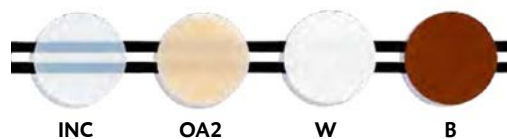
LAYER: Four enamel shades

Layer as an enamel replacement or for layering technique in combination with Pure shades



HIGHLIGHT: Four character shades

Highlight shades for individualization and to mask discolorations

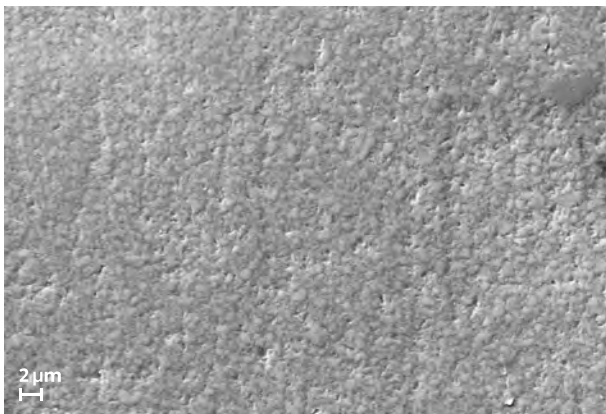


»The Ecosite Elements system offers a versatile and user-friendly restorative material, which allows the clinician to provide patients with a high-quality material to satisfy them and their esthetic requirements, however tight the schedule.«

Max-Richard Seidemann, Meppen, Germany

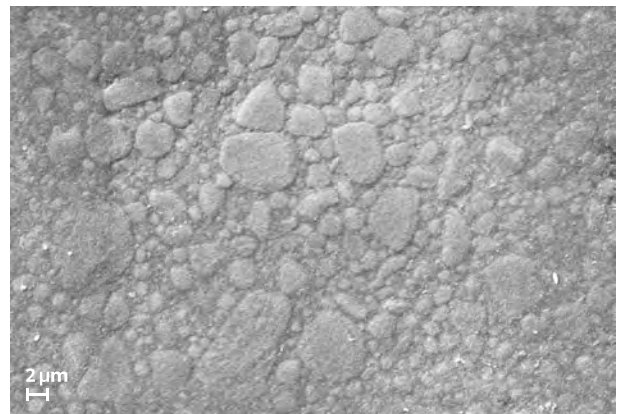
Exceptional handling Thanks to NC1 technology.

Thanks to the innovative NC1 technology («non-clustering»), this nano-hybrid composite meets all the requirements of day-to-day work. Its mechanical values are fully state of the art and are perfectly suited for the anterior and posterior regions. With the precise silanization of individual ultrafine filler elements, the NC1 technology enables a particularly homogeneous distribution, resulting in optimum working characteristics, a maximum polish and sparkling results.



Ecosite Elements
2000x magnification

Thanks to the Push-and-Flow effect, the material adjusts to the particular requirements of each situation. The initially firm consistency quickly becomes noticeably softer during modeling. The material can be securely adapted to the cavity walls, anatomical details can be accurately designed.



Filtek Supreme XTE (3M ESPE)
2000x magnification

Source: Internal images, DMG, 2018

Systematically reduced For maximum cost-effectiveness.

When it comes to efficiency, we like to consider the big picture. This is why we paid special attention to making your day-to-day work as practical as possible with Ecosite Elements. The Ecosite Elements modules have

been reduced to the essentials, and are optimally aligned and designed to complement each other perfectly. What this means for you is simpler work and less storage space needed in your dental practice.



Everything at your fingertips

Efficient and organized.

Ecosite Elements is an intelligently coordinated system with modules that complement each other perfectly. The three shade modules Pure, Layer and Highlight are supplemented by Ecosite Bulk Fill, Ecosite Bond, Etching Gel and various accessories. And because we always aim to make things as practical as possible, we also provide

organization and efficiency: The practice-oriented module combination with matching shade guides together with an easy drawer management system and the new, uncompromisingly user-friendly dispenser are all included. For the unique treatment process behind every restoration.



All elements At a glance.

For more information and the chance to discover the new
Ecosite Elements first hand: www.dmg-dental.com/elements

PRODUCT OVERVIEW

Ecosite Elements

Modules:

REF 220800	Pure Set, 5 Syringes @ 4 g (B1, A2, A3, A3.5, A4)
REF 220801	Pure Set, 5 Syringes @ 4 g (B1, A2, A3, A3.5, A4), 1 bottle @ 5 ml Ecosite Bond
REF 220802	Layer Set, 4 Syringes @ 4 g (EB, EL, EM, ED)
REF 220803	Highlight Set, 4 Syringes @ 2 g (INC, OA2, W, B)
REF 220804	Pure Set, 5 x 16 Safetips @ 0.25 g (B1, A2, A3, A3.5, A4)
REF 220805	Pure Set, 5 x 16 Safetips @ 0.25 g (B1, A2, A3, A3.5, A4), 1 bottle @ 5 ml Ecosite Bond
REF 220806	Layer Set, 4 x 16 Safetips @ 0.25 g (EB, EL, EM, ED)



Refills:

REF 220807	1 Syringe @ 4 g, B1
REF 220808	1 Syringe @ 4 g, A2
REF 220809	1 Syringe @ 4 g, A3
REF 220810	1 Syringe @ 4 g, A3.5
REF 220811	1 Syringe @ 4 g, A4
REF 220812	1 Syringe @ 4 g, EB (Enamel Bleach)
REF 220813	1 Syringe @ 4 g, EL (Enamel Light)
REF 220814	1 Syringe @ 4 g, EM (Enamel Medium)
REF 220815	1 Syringe @ 4 g, ED (Enamel Dark)
REF 220816	1 Syringe @ 2 g, INC (Incisal)
REF 220817	1 Syringe @ 2 g, OA2 (Opaque A2)
REF 220818	1 Syringe @ 2 g, W (White)
REF 220819	1 Syringe @ 2 g, B (Brown)
REF 220820	16 Safetips @ 0.25 g, B1
REF 220821	16 Safetips @ 0.25 g, A2
REF 220822	16 Safetips @ 0.25 g, A3
REF 220823	16 Safetips @ 0.25 g, A3.5
REF 220824	16 Safetips @ 0.25 g, A4
REF 220825	16 Safetips @ 0.25 g, EB (Enamel Bleach)
REF 220826	16 Safetips @ 0.25 g, EL (Enamel Light)
REF 220827	16 Safetips @ 0.25 g, EM (Enamel Medium)
REF 220828	16 Safetips @ 0.25 g, ED (Enamel Dark)



Accessories:

REF 220829	Safetip-Dispenser Pro
REF 220830	50 Luer-Lock Tips Silver
REF 220832	Ecosite Elements Shade Guide Pure
REF 220833	Ecosite Elements Shade Guide Layer
REF 220834	Ecosite Elements Drawer Insert



DMG

Chemisch-Pharmazeutische Fabrik GmbH
Elbgaustraße 248 22547 Hamburg Germany
For: +49. (0) 40. 84 006-0 Fax: +49. (0) 40. 84 006-222
info@dmg-dental.com www.dmg-dental.com
www.facebook.com/dmgdental

