



Treat caries proactively! Early treatment with infiltration

Icon Proximal
Infiltration treatment

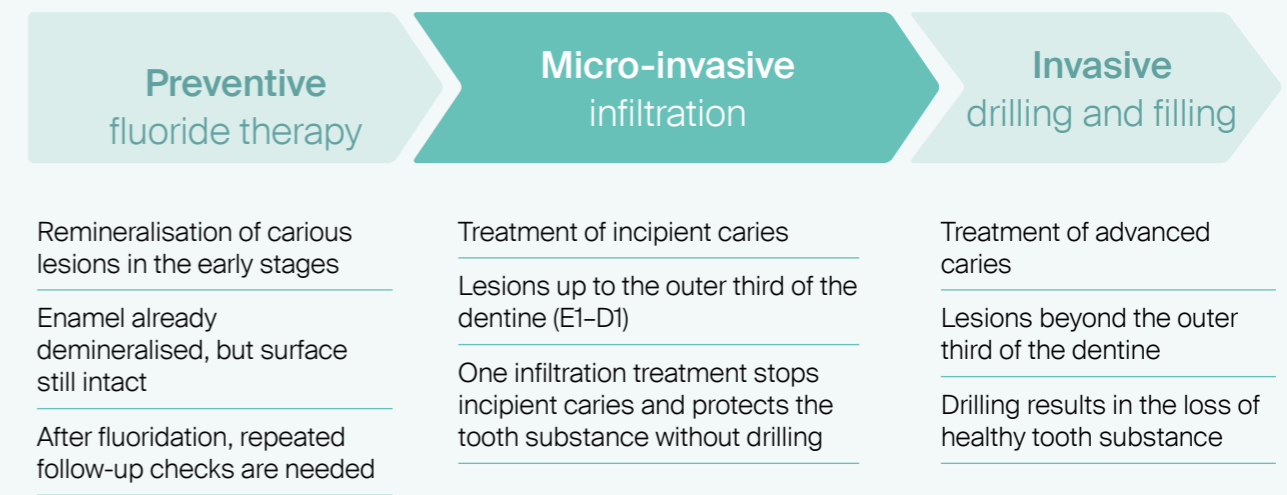


Micro-invasive treatment
of proximal caries





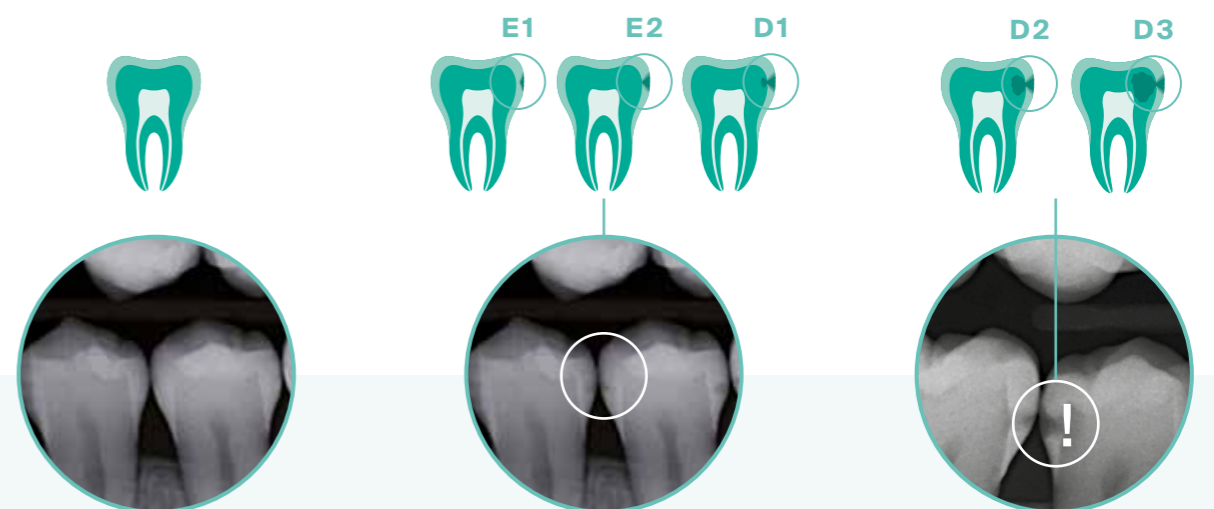
Icon Proximal closes up the treatment gap between preventive and invasive caries therapy methods



Icon Proximal Say goodbye to drilling thanks to micro-invasive infiltration therapy

- Stops incipient caries in hard-to-reach areas between teeth
- Protects healthy tooth substance and preserves the tooth over the long term

Verified in numerous studies and used successfully in dental clinics for many years.



Incipient carious lesions can be remineralised by means of fluoridation with Flairesse prophylaxis products.

Icon Proximal can be used to effectively arrest the progress of caries that X-rays show have not advanced farther than the outer third of the dentine (E1-D1).

If X-rays show the lesion has advanced past the outer third of the dentine, classic invasive treatment is needed.

Early intervention thanks to infiltration

Micro-invasive caries treatment



Incipient caries before treatment:

Damaging acids attack the enamel, drawing out minerals, and the tooth becomes porous.



Infiltration treatment with Icon Proximal:

Through capillary action, the low-viscosity infiltrant penetrates deep into the porous tooth enamel where it is then cured with light.



After micro-invasive treatment:

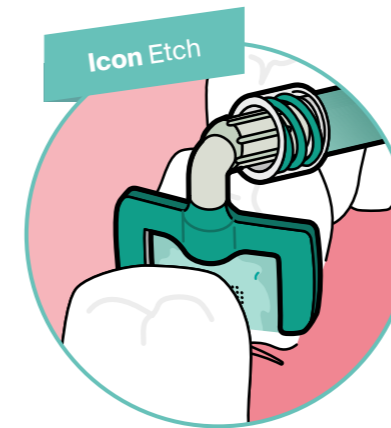
The polymerised infiltrant reliably seals the lesion and stops the progression of incipient caries early on. The healthy tooth structure remains intact.



Stop proximal caries

An ingeniously simple principle

The tooth-preserving caries treatment in interdental spaces with Icon Proximal is completed in three simple steps:

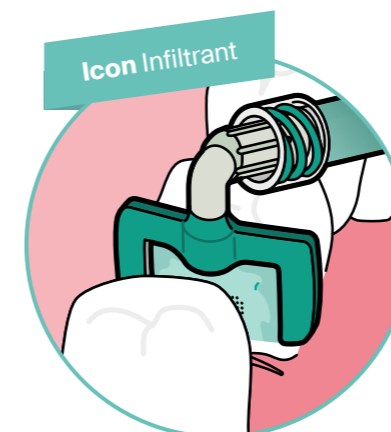
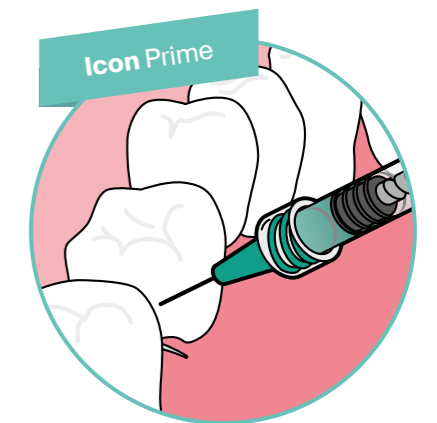


- 1 Create access to the lesion**
Icon Etch removes the pseudo-intact surface layer

After cleaning, isolation and separation, the affected tooth is prepared for infiltration with Icon Etch. The HCl gel is applied with a special applicator and has an etching effect to make the lesion accessible. This is the only way to enable the infiltrant later to penetrate the pore system.

- 2 Condition the lesion**
Dry and prepare the lesion with Icon Prime

After removal of the pseudo-intact surface layer, the lesion is optimally prepared for the following infiltration step with Icon Prime: excess water molecules are removed from the lesion and the wettability is increased so that the infiltrant can optimally bond to the lesion surface.



- 3 Infiltration**
Fill the lesion with Icon Infiltrant

Icon Infiltrant – a low-viscosity resin – is applied with specially developed application tips and penetrates deep into the porous enamel as a result of capillary forces. The resin in the lesion is then cured with light. The incipient caries can be stopped without any drilling. The healthy tooth structure remains intact.

The infiltration treatment

Application in just a few steps

Diagnosis



Initial clinical situation.



Exact and early detection of proximal lesions by means of bitewing X-ray. Fibre-optic transillumination or NIRI can be used as an alternative.

Preparation



Clean the affected tooth and adjacent teeth, remove residue with water spray. Insert the dental wedge for tooth separation gently and in increments, so that the tissue can adjust to the changes in pressure.



Local isolation by means of rubber dam or MiniDam (see right).

Treatment



2 minutes etching with HCl gel Icon Etch – the etching gel only comes out from the cyan-coloured side of the applicator, which gives optimal protection for the adjacent teeth that are not affected.



Dry for 30 seconds and prepare the lesion with Icon Prime.



3 minutes infiltration with Icon Infiltrant. Use dental floss to remove excess material.



Light cure for 40 s from all sides. Infiltrate again for 1 minute with Icon Infiltrant, remove excess material and light-cure for 40 s. Subsequent surface polish with polishing strips.

Documentation

Filling out the attached Icon patient card ensures that the treatment can be tracked effectively.

Note: Icon Proximal is not radiopaque

Behandelter Zahn + Fläche Treated tooth + surface															
18	17	16	15	14	13	12	11	21	22	23	24	25	26	27	28
1	2	3	4	5	6	7	8	9	10	11	12	13	14	15	16
I				55	54	53	52	51	61	62	63	64	65		II
				A	B	C	D	E	F	G	H	I	J		
				T	S	R	Q	P	O	N	M	L	K		
IV				85	84	83	82	81	71	72	73	74	75		III
32	31	30	29	28	27	26	25	24	23	22	21	20	19	18	17
48	47	46	45	44	43	42	41	31	32	33	34	35	36	37	38

Zahn | Tooth: 1 6 Fläche | Surface: d

Läsionstiefe | Lesion depth: E1 X D1 D2 D3 P

Behandlungsdatum | Treatment date: 0,1 0,6 2,0 2,5

Kontrolldatum 1 | Follow-up appointment 1: E1 E2 D1 D2 D3 P

Kontrolldatum 2 | Follow-up appointment 2: E1 E2 D1 D2 D3 P

Kontrolldatum 3 | Follow-up appointment 3: E1 E2 D1 D2 D3 P

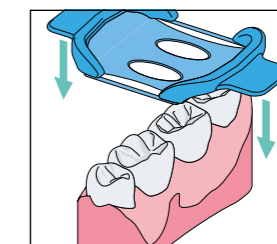
Faster protection and adequate isolation where it matters – with the DMG MiniDam

Local protection and dryness

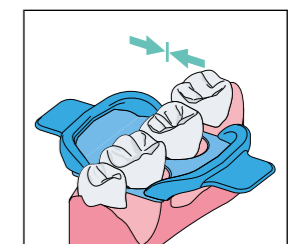
The DMG MiniDam protects the proximal area during treatment – quickly, easily and comfortably for the patient. The practical silicone shield ensures that the site being treated is sufficiently dry. At the same time, the gingiva is protected from the materials being used (e.g. etching gel).

Applied quickly and easily

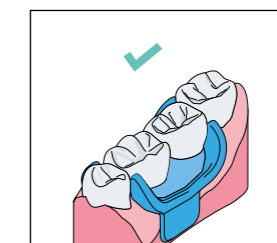
The DMG MiniDam can be placed by one person in just a few seconds and stabilises itself – without clamps. This makes the application extremely comfortable for both the dentist and the patient and simplifies work, such as caries infiltration in the proximal area. The latex-free material is also suitable for people with allergies.



Stretch the DMG MiniDam and pull it towards the gingiva.



Relieve the tension on the DMG MiniDam and fold it over cervically.



The DMG MiniDam holds firmly in place without the need for clamps.



View the application video on DMG's YouTube channel

Icon Proximal was developed in collaboration with leading international researchers from Charité Berlin and has proved its worth not only in practice but also in long-term clinical studies.



12 years
of effective use in
practice

70 countries
use Icon



Micro-invasive
infiltration with

**Icon Proximal
prevents caries
progression reliably and
with lasting effect –**

over a period of seven years, only 9 % of lesions treated with Icon Proximal showed any progression, compared with 45 % in the placebo group. The annual failure rate of micro-invasive infiltration therapy is 1.3 %, making it comparable to composite restorations⁵



Scientifically
researched in over
350 studies⁶

Icon Proximal can be used in
**both deciduous and
permanent teeth¹²³**



Micro-invasive infiltration
**prevents
caries progression –**
even in
high-risk patients.

After 24 months,
97.1 % of lesions
in the infiltration
group were stable⁴



¹ Dorri M, Dunne SM, Walsh T, Schwendicke F. Micro-invasive interventions for managing proximal dental decay in primary and permanent teeth. Cochrane Database Syst Rev. 2015; 2015(1).

² Ekstrand KR, Bakshshandeh A, Martignon S. Treatment of proximal superficial caries lesions on primary molar teeth with resin infiltration and fluoride varnish versus fluoride varnish only: efficacy after 1 year. Caries Res. 2010; 44(1): 41-6.

³ Cebula M, Göstermeyer G, Krois J, Pitchika V, Paris S, Schwendicke F, Effenberger S. Resin Infiltration of Non-Cavitated Proximal Caries Lesions in Primary and Permanent Teeth: A Systematic Review and Scenario Analysis of Randomized Controlled Trials. J Clin Med. 2023; 12(2): 727.

⁴ Peters MC, Hopkins AR Jr, Yu Q. Resin infiltration: An effective adjunct strategy for managing high caries risk-A within-person randomized controlled clinical trial. J Dent. 2018; 79: 24-30.

⁵ Paris S, Bitter K, Krois J, Meyer-Lueckel H. Seven-year-efficacy of proximal caries infiltration - Randomized clinical trial. J Dent. 2020; 93: 103277.

⁶ Ramos I, Rocha AO, Garcia JM, Jesus LH, Anjos LMD, Santos PS, Santana CM, Cardoso M. What are the global trends in research on resin infiltration in dentistry? An altmetric and bibliometric analysis. Braz Oral Res. 2025 Jul 7;39:e067. doi: 10.1590/1807-3107bor-2025.vol39.067. PMID: 40638417; PMCID: PMC12237412.



Proven in practice Recommended by dentists

Icon Proximal is used for micro-invasive caries treatment every day worldwide. This is what international dentists say about infiltration with Icon Proximal:



"This micro-invasive therapy allows us to treat proximal carious lesions painlessly while retaining the tooth structure."

Prof. Hendrik Meyer-Lückel / Prof. Sebastian Paris,
developers of the infiltration therapy

"Caries infiltration fills a crucial gap in the range of treatments available to dentists. For small carious defects, we previously only had the options of waiting and fluoridising or else excavating and filling."



Dr. Andreas Schult, MSc



"The infiltration concept (Icon) is a very useful treatment method for proximal enamel lesions."

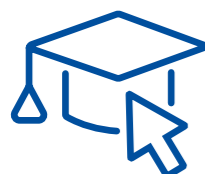
Erik-Jan Muts, MSc

"I trust this product (Icon) as it provides predictable results without affecting the enamel, making it a reliable option in my day-to-day practice. It has helped me to offer my patients a minimally invasive solution that protects their teeth and improves their self-confidence."



Dr Kiran Shankla

Do you have any questions? We can help you



Supportive training

Arrange a free-of-charge appointment with our sales reps or use the online training options in our DMG Academy to find out more about infiltration treatment with Icon Proximal.



You can find out more at
www.dmg-dental.com/Contact



Info for patients & Dentist Finder

On the info page for patients, the infiltration treatment is explained clearly in an engaging manner that is easy to understand – with videos and integrated Dentist Finder.



You can find out more at
www.drilling-no-thanks.com/start



Webinar: Billing examples for infiltration treatments

The DMG Academy provides training content relating to dentistry, our products and dental 3D printing, and offers tips for the dental clinic. This means you can refresh your knowledge flexibly and on demand at any time and continue your education on selected topics.



Register at
www.dmgdental-academy.com/learn

Good reasons to choose Icon Proximal

- Halt caries at an early stage
- Preservation of healthy tooth structure
- Gentle treatment – without drilling or anaesthesia
- Effectiveness proven in numerous studies, tried-and-tested in years of practice



Product overview

Icon Proximal

1 Treatment unit contains:

- 1 Syringe @ 0.45 ml Icon Etch
- 1 Syringes @ 0.45 ml Icon Prime
- 1 Syringe @ 0.45 ml Icon Infiltrant
- 6 Proximal Tips
- 1 Capillary Tip
- 4 Dental wedges

Starter Pack:

1 Treatment unit REF 220523

Pack:

2 Treatment units REF 220524

Economy Pack:

7 Treatment units REF 220525

Refill packs:

Icon Etch	REF 220530
Icon Prime	REF 220531
Icon Infiltrant	REF 220532
Icon Proximal Tips	REF 220534
Icon Capillary Tips	REF 220535
Icon Wedges	REF 220536

DMG MiniDam

Pack: 20 pcs REF 220381

Lesion treatments per sales unit

Sales unit	Treatment units	Lesion treatments
Starter pack	1	2
Pack	2	4
Economy Pack	7	14

More information about
Icon Proximal



Awarded:

Independent panels of experts have recognised Icon Proximal as a trend-setting solution and given it numerous awards.



A smile ahead
together



DMG

Chemisch-Pharmazeutische Fabrik GmbH

Elbgaustraße 248 22547 Hamburg Germany

Fon: +49. (0) 40. 84 006-0 Fax: +49. (0) 40. 84 006-222

info@dmg-dental.com www.dmg-dental.com

www.facebook.com/dmgdental

000960/2026-03

