

Transillumination



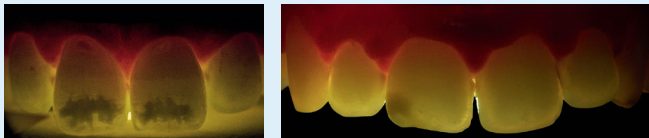
Transillumination with light.

Position the light device behind the tooth to illuminate it.

Transillumination to support diagnosis:

The borders of the lesion under transillumination give you feedback about lesion localisation within the enamel.

- ↳ Demarcated borders = superficial lesion = lesions are located close to the surface.
- ↳ Diffuse borders = mixed/deep lesions = lesions are located away from the surface.



Demarcated borders

Diffuse borders

© Dr Omar Marouane, Tunisia

Transillumination during Icon Prime application:

The information on the accessibility of lesions that you obtain during ethanol application can be improved in this step by transillumination.

Transillumination during Icon Infiltrant application: Transilluminating shortly within the infiltration can provide a better understanding of the infiltration progress.

- ! **Please ensure** that you do not use a light curing lamp for transillumination during infiltration.

Bleaching

Bleaching is an essential step of the individual treatment plan for patients with developmental enamel opacities. Bleaching is proven to enhance the results of resin infiltration^[1].

Effects of bleaching:

- ↳ Removal of organic residue in the lesion body, that can potentially hamper infiltration.
- ↳ Reduction of colour contrast between affected and healthy enamel.
- ↳ Removal of extrinsic and intrinsic discoloration.

Preview with Icon Prime

In addition to the priming property, Icon Prime can also provide information about the access to the lesion and can therefore give a preview of the treatment result.

- ↳ **Positive preview:** The whitish appearance of the lesion disappears in the first seconds after wetting.
- ↳ **Partially positive preview:** The whitish appearance just partially disappears. The appearance of the lesion changes, but not completely.
- ↳ **Negative preview:** No colour change can be observed during Icon Prime application.

Composite

Restoration after infiltration:

In some cases, it is necessary to remove a significant amount of enamel on top of the lesion to get lesion access for infiltration. Such significant enamel losses need to be compensated with composite.

[1] Schoppmeier CM et al. 2018, „Power bleaching enhances resin infiltration masking effect of dental fluorosis. A randomized clinical trial“, Journal of Dentistry 79: 77–84.

