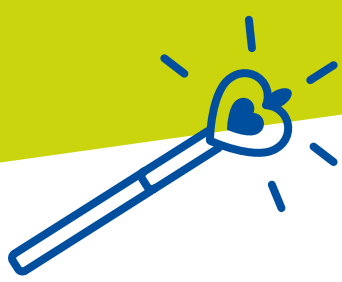




3D the way I want it

Price List Effective May 26 for  
DentaMile **Design & Print Service**

Now  
available:  
Design  
Service



# Our prices

These are the objects we can print. We offer the following **finish options** for our printed objects.

- **Grade 0:** untreated including support structures
- **Grade 1:** untreated without support structures (surcharge: €4)
- **Grade 2:** pre-polished without support structures (surcharge: €8)

	Designation	Material	Finish options	Price
	<b>Splints</b>			
	Bleaching tray	LuxaPrint Ortho Flex	0, 1	€44
	Adjusted bleaching tray	LuxaPrint Ortho Flex	0, 1	€44
	Protective splint	LuxaPrint Ortho Plus	0, 1, 2	€47
		LuxaPrint Ortho Comfort	0, 1, 2	€55
	Adjusted bite splint	LuxaPrint Ortho Plus	0, 1, 2	€47
		LuxaPrint Ortho Comfort	0, 1, 2	€55
	Adjusted bite splint with front canine guide	LuxaPrint Ortho Plus	0, 1, 2	€47
		LuxaPrint Ortho Comfort	0, 1, 2	€55
	Michigan splint	LuxaPrint Ortho Plus	0, 1, 2	€47
LuxaPrint Ortho Comfort		0, 1, 2	€55	
Bracket transfer splint	LuxaPrint Ortho Flex	0, 1	€44	
	<b>Templates*</b>			
	Drilling template	LuxaPrint Ortho	0, 1	€94
Drilling template, quadrant	LuxaPrint Ortho	0, 1	€59	
				*Supplied without drill sleeves.
	<b>Tray</b>			
Custom impression trays	LuxaPrint Tray	-	€23	



Designation	Material	Finish options	Price
<b>Models</b>			
Dental arch		-	€18
Model with base		-	€28
Orthodontic model		-	€28
Implant models		-	€34
Die models		-	€34
Model with base, quadrant	LuxaPrint Model GRY, IVR, BGE, TRA	-	€22
Orthodontic model, quadrant		-	€22
Implant models, quadrant		-	€26
Die models, quadrant		-	€26
<b>Crowns and bridges</b>			
Single crown	LuxaPrint material*	0,1	€25
Bridge, 2-piece, 3-piece, etc.	A1, A2, A3	0,1	€25

\* A high-quality third-party alternative material is used if LuxaPrint material is not available.



When it comes to **design services**, we keep things very simple:

- Flat rate per jaw and design: €15 including one correction round in the approval process.
- We charge an extra €7 for every 5 minutes of additional work.

# When things need to get done fast

## Delivery options

In order for you to receive your prints as quickly as possible, we always send them by UPS. You can also choose standard or express delivery when placing your order.

- Standard delivery charge across Germany: €4.95 + €0.90 fuel supplement / delivered within approx. 1 to 2 working days
- Express delivery charge across Germany: €7.95 + €1.94 fuel supplement / delivered within approx. 1 working day



# Response times for the Design & Print Service

## Design service

- Mon–Thu: Guaranteed same-day order confirmation for orders received before 1 pm.
- Fri: Guaranteed same-day order confirmation for orders received before 12 noon.

We will gladly create a design to your own specifications. The first steps involve filling out the digital order form and uploading your scan data. After delegating the order to the DentaMile Design & Print Service, we will go ahead and start checking your scan data. You will see the order acceptance in your status display. Your design proposal will be sent to you by the next working day at 12 noon.

## Print service

Print orders are ready for despatch within 24 hours after the data supplied has been checked. If a design order is placed before the print order, the print preparation can only take place once the design has been finally approved by the customer.

## Finish options

Surface finishing is a time-consuming process. In this case, please expect an additional processing time of half a working day.

- **Grade 0:** The object does not undergo any subsequent treatment after the validated production process (printing, cleaning and post-curing). For example, grade 0 splints still have support structures attached. Subsequent processing by the customer is necessary. For cast models, we only offer grade 0. Subsequent processing by the customer is not necessary.
- **Grade 1:** Any existing support structures are manually removed. Subsequent processing by the customer is necessary.
- **Grade 2:** The object's support structures are removed and the surface is finished to a medium gloss level. Slight reworking by the customer is necessary. It is not a finished medical device.