



Made for  
real life

Luxatemp MaxProtect, Luxatemp Star,  
Luxatemp Fluorescence, Luxatemp Plus  
Provisional Restorations



Provisional restorations  
for more than 30 years





For decades, the name Luxatemp has been associated internationally with precision-fit provisional crowns and bridges.

Whether it's Luxatemp Plus, the tried-and-tested classic Luxatemp Fluorescence for superior natural aesthetics, Luxatemp Star, which sets new benchmarks in flexural strength and break resistance, or the new Luxatemp MaxProtect for maximum stability and outstanding aesthetics – today, dentists in over 80 countries trust the quality of multi-award winning Luxatemp. To complement the Luxatemp range, DMG also offers an entire system of superior-grade materials for provisional restorations.

## Luxatemp MaxProtect – The perfect symbiosis of durability and aesthetics

Luxatemp MaxProtect is a material with long-term stability and optimised mechanical properties, and its durability of 12 months has been confirmed by a clinical study\*. Luxatemp MaxProtect is the product of choice, especially:

- When your treatment case requires an extended healing phase (e.g. after an implant restoration, periodontitis or root canal treatment)
- When you're looking for an aesthetic solution that is highly durable yet affordable for the patient

### The right choice when it matters.

Luxatemp MaxProtect – your best choice for maximum stability and an aesthetic yet cost-effective restoration. Bridge longer healing phases with Luxatemp MaxProtect and benefit from exceptional durability and short treatment times. Choosing Luxatemp MaxProtect means that you can provide your patient with a highly aesthetic restoration and the opportunity to bridge the time until the final restoration in a cost-effective way.

### Benefits:

- Very high break resistance and flexural strength
- Proven long-term durability
- Precise fit
- Natural aesthetics and shade stability
- Superior surface smoothness
- Very good biocompatibility



\* Source: clinical study (Reg. No. NCT03160950)

# Luxatemp Star

## For a look that's hard to beat

### Setting new standards

With Luxatemp Star, DMG makes the best\* even better. In addition to optimised initial hardness, Luxatemp Star also sets impressive benchmarks in terms of break resistance and flexural strength. This provides even greater stability

and longevity. Durability should also mean long-lasting aesthetics. The extraordinary long-term shade stability of Luxatemp Star offers a guarantee you can rely on.

An additional benefit in practical use: the material reaches final hardness particularly quickly.

### Benefits:

- High break resistance and flexural strength
- Improved initial hardness
- The precise fit that users have come to expect
- Excellent aesthetics and long-term shade stability
- Faster achievement of final hardness



\* 2015 Top Provisional - Esthetic Award for Luxatemp Star (Luxatemp Star is sold as "Luxatemp Ultra" in the USA and has also been tested by The Dental Advisor under this name).  
 \*\* Source: 2018 Top Award Winner - Aesthetic Provisional for Luxatemp Fluorescence, tested by The Dental Advisor.

# How Luxatemp Star makes the best even better

### It's all about bending and breaking

Luxatemp provisional restorations last longer. This is because emphasis was placed on mechanical stability during development. As well as offering improved initial hardness, Luxatemp Star sets new benchmarks in the areas of break resistance and flexural strength, ensuring even greater stability and durability.

In this respect, flexural strength values in particular determine when a material will yield and fracture. Ultimately, this is what the success of a restoration is measured by, because minor deviations can be critical, particularly in the case of two-unit and multi-unit provisional restorations.

### Looking good in the long-term

The fluorescence of the material is similar to that of natural dentition. Six different shades give dentists plenty of scope to create a harmonious, natural overall appearance. And the remarkable thing is, this good impression is built to last. Thanks to extremely high shade stability, even long-term provisional restorations retain an attractive appearance.

Luxatemp Star shows particularly good long-term shade stability below 3ΔE, thereby proving its outstanding colour fidelity.

### A great fit. Right away

Provisional restorations must fit immediately and precisely, without lengthy grinding and correction. Luxatemp Star offers a perfect fit that you can rely on. The superior material properties are the key to this precision: optimum flow behavior while taking the impression, shrinkage that has been reduced to an absolute minimum, low water sorption - that's what it takes to produce exact results. And the practical Automix and Smartmix systems simplify the mixing and application processes.

### Perfection happens when everything comes together like that.



Temporary made with Luxatemp Star

# Luxatemp Fluorescence

## Naturally aesthetic

### For a natural appearance

Luxatemp Fluorescence ensures convincing aesthetics. The fluorescence of the material is similar to that of a real tooth. As a result, the provisional restorations look really natural – regardless of ambient lighting.

Six shade nuances enable customised, aesthetic results. The extremely high shade stability ensures lasting, attractive, long-term provisional restorations. And it goes without saying that Luxatemp Fluorescence offers the superior material properties and excellent biocompatibility that have already made Luxatemp Plus an international success.



Naturally fluorescent provisional restorations with Luxatemp Fluorescence

### Benefits:

- Natural fluorescence
- Convincing aesthetics regardless of ambient lighting
- Low polymerisation shrinkage
- High abrasion resistance
- Very good biocompatibility



# Luxatemp Plus

## Fits right away

### Proven precision

Provisional restorations must fit immediately and precisely, without lengthy grinding and correction. For many years, Luxatemp Plus has been offering a perfect fit that you can rely on. The material is particularly easy to process, and is also suitable for long-term provisional restorations thanks to its superb abrasion resistance.

Moreover, Luxatemp Plus offers outstanding support for grinding as well as a high-gloss finish when polished. Alternatively, for an easier and more hygienic solution: coat with Luxatemp Glaze & Bond. And thanks to the practical Automix and Smartmix systems, mixing and application can also be completed in conveniently quick and precise fashion.

### Benefits:

- Perfect precision fit
- High flexural strength and abrasion resistance
- Very good biocompatibility



# Luxatemp: a strong family.

For years, Luxatemp has been synonymous with precision-fit provisional crowns and bridges worldwide. With Luxatemp MaxProtect, DMG is now leading the way with the next generation of long-term provisional restorations that combine maximum stability, the best

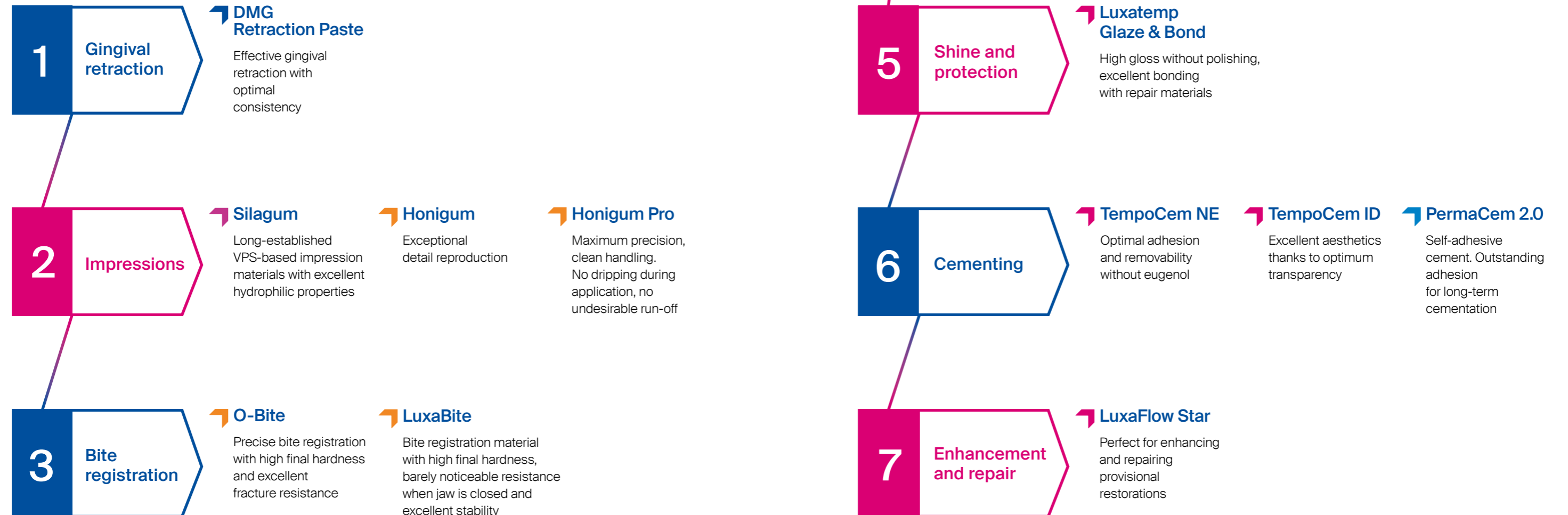
possible aesthetics and long-lasting durability. Alongside Luxatemp MaxProtect, DMG also offers other high-quality materials for provisional restorations. This means that the right material with the exact properties you need is always there when you need it.

		Luxatemp Plus	Luxatemp Fluorescence	Luxatemp Star	Luxatemp MaxProtect
<b>Material properties</b>	<b>Advantages / benefits</b>				
High fracture toughness / flexural strength	<ul style="list-style-type: none"> <li>Longer durability and greater stress resistance</li> <li>No breakage or deformation</li> <li>Safe, efficient and reliable</li> <li>Particularly suitable for longer healing phases</li> <li>Ensures maximum stability and safety</li> </ul>	★★★★★	★★★★★	★★★★★	★★★★★
Very high abrasion resistance	<ul style="list-style-type: none"> <li>Longer durability</li> <li>Less follow-up work</li> <li>Safe and saves time</li> </ul>	★★★★★	★★★★★	★★★★★	★★★★★
Optimised surface properties	<ul style="list-style-type: none"> <li>Easy to polish</li> <li>Quick, time-saving polishing</li> </ul>	★★★★★	★★★★★	★★★★★	★★★★★
Fast initial hardness	<ul style="list-style-type: none"> <li>Efficient for dentists</li> <li>Comfortable for patients</li> </ul>	★★★★★	★★★★★	★★★★★	★★★★★
Low shrinkage	<ul style="list-style-type: none"> <li>Precise fit</li> <li>Time saving when finishing</li> </ul>	★★★★★	★★★★★	★★★★★	★★★★★
<b>Handling</b>					
Low polymerisation shrinkage Excellent polishability	<ul style="list-style-type: none"> <li>Time saving</li> <li>Confidence in quality</li> </ul>	★★★★★	★★★★★	★★★★★	★★★★★
<b>Natural aesthetics</b>					
Natural fluorescence	<ul style="list-style-type: none"> <li>Natural appearance</li> <li>Aesthetic result</li> </ul>	★★★★★	★★★★★	★★★★★	★★★★★
Shine retention	<ul style="list-style-type: none"> <li>Comfortable for patients</li> <li>Gums remain healthy</li> </ul>	★★★★★	★★★★★	★★★★★	★★★★★
Long-term shade stability	<ul style="list-style-type: none"> <li>For particularly long wear time with lasting high aesthetics</li> </ul>	★★★★★	★★★★★	★★★★★	★★★★★
<b>Biocompatibility</b>					
Does not contain methyl methacrylate	<ul style="list-style-type: none"> <li>Low allergy potential</li> <li>Safety</li> </ul>	★★★★★	★★★★★	★★★★★	★★★★★
<b>Automix system</b>					
Reliable system for provisional restorations		★★★★★	★★★★★	★★★★★	★★★★★

# The perfect complement: Discover our product family for prosthetics.

Discover DMG's comprehensive product range for the complete construction, cementation, enhancement and repair of Luxatemp long-term provisional restorations. Our products have been specially developed to offer you maximum support

at every stage of the provisional treatment process. From exact construction to permanent cementation, you can rely on outstanding results and long-lasting aesthetics.



# The role of provisional restorations in aesthetic dentistry

Provisional restorations are an essential part of aesthetic dentistry. They not only protect, but also allow for aesthetic and functional adjustments before the final restoration. The Luxatemp family offers a suitable solution for every case, to meet high demands in terms of function and aesthetics.



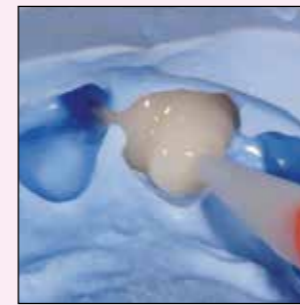
Slitting of the crown using a carbide bur



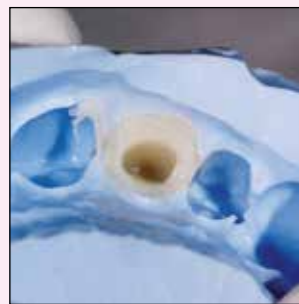
Die with secondary caries following removal of the crown



Palatal excision for sufficient layer thickness



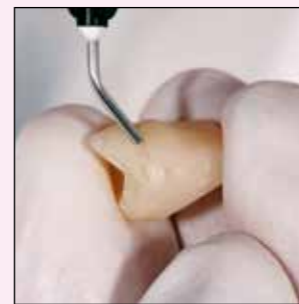
Application of Luxatemp Plus in the pre-impresion



Provisional restoration after removal in the pre-impresion



Intraoral fitting of the unfinished provisional restoration



Repair of imperfections using LuxaFlow Star



Intraoral situation following final coating with Luxatemp Glaze & Bond



## "The best of the best"

The products in the Luxatemp range have been and continue to be rigorously tested by international testing institutes.

The results: excellent.



## Packaging

### Luxatemp MaxProtect

Pack:	1 Cartridge @ 50 ml, 15 Automix Tips	Shade A1	REF 130100	Shade A3.5	REF 130103
		Shade A2	REF 130101	Shade B1	REF 130104
		Shade A3	REF 130102	Shade Bleach Light	REF 130105

### Luxatemp Star

Pack:	1 Cartridge @ 76 g, 15 Automix Tips	Shade A1	REF 110906	Shade A3.5	REF 110909
		Shade A2	REF 110907	Shade B1	REF 110910
		Shade A3	REF 110908	Shade Bleach Light	REF 110911
	1 Smartmix Syringe @ 15 g, 10 Smartmix Tips	Shade A2	REF 110901	Shade B1	REF 110904
		Shade A3	REF 110902	Shade Bleach Light	REF 110905
Economy pack:	5 Cartridges @ 76 g, 75 Automix Tips	Shade A1	REF 110954		
		Shade A2	REF 110912		
		Shade A3	REF 110913		

### Luxatemp Fluorescence

Pack:	1 Cartridge @ 76 g, 15 Automix Tips	Shade A1	REF 110585	Shade A3.5	REF 110587
		Shade A2	REF 110586	Shade B1	REF 110588
		Shade A3	REF 110710	Shade Bleach Light	REF 110589
	1 Smartmix Syringe @ 15 g, 10 Smartmix Tips	Shade A1	REF 110718	Shade B1	REF 110722
		Shade A2	REF 110719	Shade Bleach Light	REF 110723
		Shade A3	REF 110720		
Economy pack:	5 Cartridges @ 76 g, 75 Automix Tips	Shade A2	REF 110712		
		Shade A3	REF 110713		

### Luxatemp Plus

Starter pack:	1 Cartridge @ 76 g, 15 Automix Tips, 1 Automix Dispenser	Shade A2	REF 110400		
Pack:	1 Cartridge @ 76 g, 15 Automix Tips	Shade A1	REF 110401	Shade B1	REF 110404
		Shade A2	REF 110402	Shade Bleach Light	REF 110368
		Shade A3.5	REF 110403		
Economy pack:	5 Cartridges @ 76 g, 75 Automix Tips	Shade A1	REF 110405	Shade A3.5	REF 110407
		Shade A2	REF 110406		
Accessories:	Luxatemp Star/Fluorescence/Plus, 45 Automix Tips Blue 10:1		REF 110409		
	Luxatemp Star/Fluorescence, 50 Smartmix Tips Green-Blue		REF 110990		
	1 Automix Dispenser Type 50		REF 110411		





**A smile ahead**  
together



**DMG**

**Chemisch-Pharmazeutische Fabrik GmbH**

Elbgaustraße 248 22547 Hamburg Germany

Fon: +49. (0) 40. 84 006-0 Fax: +49. (0) 40. 84 006-222

info@dmg-dental.com www.dmg-dental.com

www.facebook.com/dmgdental

