



Ideal in combination with the
new **Flairesse** Bleaching Gel

Dental success with
digital teamwork.

Our DentaMile **bleaching** workflow.





Bleaching tray workflow and infiltration treatment with Icon – it's a match!

Is bleaching merely a cosmetic process?

The desire for beautiful teeth goes beyond mere cosmetics – aesthetic improvement directly impacts the patient's quality of life. Combining bleaching with subsequent Icon infiltration treatment can often yield particularly impressive aesthetic results in the case of fluorosis, caries-related white spots and even traumatic lesions.



“A key part of the DentaMile bleaching tray workflow is the tightness of the tray's gel reservoir against the gums – a feature that can only be achieved by means of 3D printing. This edge sealing ensures efficient bleaching and protects the gums from harmful influences.”

Dr Susanne Effenberger
DMG Dental-Material GmbH, Head of Clinical Research and Product Management Dental Solutions.



“Results demonstrate that the greatest increase in favourable outcomes and the highest patient satisfaction are achieved through bleaching plus Icon infiltration following a defined regimen.”

PD Dr Michael J. Wicht
University Hospital Cologne, Senior Physician



With DMG

3D-printed bleaching trays with final reservoir edge – controlled bleaching gel positioning.



Without DMG

Thermoplastic trays – uncontrolled bleaching gel distribution and irritation of the gums.

NEW NEW NEW NEW NEW NEW

Developmental enamel opacities such as MIH or fluorosis? **DMG offers a holistic product portfolio** consisting of bleaching gel, infiltration treatment and bleaching tray workflow.



For further information :



Product advantages For patients:

- The bleaching gel will not leak out.
- No irritation in the gums.
- The bleaching gel does not get watered down due to saliva.
- A very impressive aesthetic result in the case of fluorosis, caries-related white spots as well as traumatic lesions.
- High motivation and a quick, pleasant treatment process.

Product advantages For the dental practice:

- Comfortable for patients thanks to custom-fitted bleaching trays, manufactured in the clinic, laboratory or Print Service.
- Clinics that have their own 3D printer can print the trays for home bleaching easily and give them to the patient to take home the same day.
- A positive image and trust thanks to the use of the latest methods.
- In the future, the bleaching tray can also be used for individual fluoride therapy.

Simple, precise, efficient.

The bleaching tray workflow.

DMG DentaMile's cloud-based bleaching tray workflow makes it exceptionally easy for you to quickly and efficiently make light, custom-fitted bleaching trays in-house. Quick, simple and precise – includes the exact reservoir design. Take advantage of the new options to ensure quick treatment without thermoforming processes or model preparation. Convenient for patients, economically convincing for you.

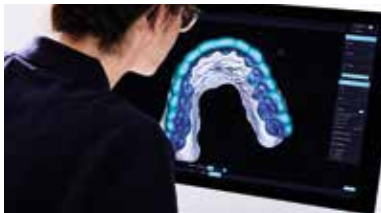
This is how it works:

1. Scan the patient's teeth.



2. Accept the patient's case in DentaMile connect automatically.

3. Create the individual design in 3 steps.



4. Print bleaching trays with customised material reservoirs using your own 3D printer, the DentaMile Print Service or with the help of a partner laboratory.

5. Carry out the bleaching process until the desired result is achieved.

6. Optional: infiltration treatment with Icon.

Advantages of the workflow:

- ✔ Perfectly fitting bleaching trays in just 3 steps.
- ✔ Extremely precise bleaching gel reservoir.
- ✔ No escape of bleaching gel.
- ✔ No irritation in the gums.
- ✔ User-friendly operation.
- ✔ Economical, quick work.
- ✔ No preparation of models, no thermoforming, thus eliminating a significant amount of labour and material effort.
- ✔ Validated workflows, suitable material, powerful 3D printers and post-processing units combined in the DMG DentaMile portfolio.

For more
product information:

