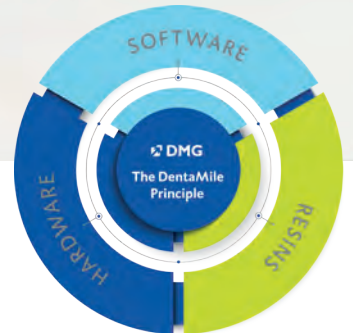


# 3D the way I want it!



## The flexible DentaMile usage model

- Printing your own 3D models?
- Networking with a dentist or a partner laboratory?
- Just scanning?
- Or designing digital models as well?

You can get involved in the digital workflow no matter what you're doing. Our award-winning DentaMile connect software's flexible usage model offers you an outstanding range of possibilities, with four different usage options. You decide what you'd like to do – and which licence service package is right for you.

Dental 3D printing is easy. **With DentaMile connect.**

[www.dentamile.com](http://www.dentamile.com)

You will find a detailed overview of the usage options and what services they include on the back of this flyer.

# Your options with DentaMile connect at a glance



Features included	Creator	Creator Plus	Designer	Producer
Creating patient data and uploading STL files	✓	✓	✓	✓
Design workflow (including virtual articulator)	✗	✗	✓	✓
Automated 3D printing	✗	✗	✗	✓
Sharing and delegating cases	✓	✓	✓	✓
Connections to other DentaMile connect users	Limited to one connection to a Designer or Producer	Unlimited connections to Designers or Producers	Max. 15 Creator connections; unlimited connections to Creator Plus or Producers	<b>Unlimited connections to Creator, Creator Plus or Designers</b>
Cloud storage	5 GB	5 GB	5 GB	<b>5 GB</b>
Free updates	✓	✓	✓	✓
Service and support	✓	✓	✓	✓

The minimum contract term for all licence options is 12 months. The contract will be automatically renewed at a charge for a further contract period if it is not terminated in writing by one of the parties at least three months before the end of the contract.

## Would you like to find out more about DentaMile connect?

**Contact us. We'll be happy to advise you in person:**

**Tel.:** 0800 364 42 62 (free from German landlines)

**Email:** [service@dmg-dental.com](mailto:service@dmg-dental.com)



# Option 1: **Creator**

## 3D printing without a 3D printer

**Especially ideal for**  
**Dentists with intraoral scanners**

### **A brief overview of the option**

**As the »Creator«, you can pass on your scanned patient data to an affiliated partner laboratory. The laboratory takes care of the design and printing.**

### **In detail: What the »Creator« option affords you**

- ↪ Work in a validated digital workflow with DentaMile connect
- ↪ Benefit from the digital workflow without investing in a 3D printer
- ↪ Offer your patients a quick and precise solution
- ↪ Reliably, quickly and easily communicate anonymised patient data and STL scan files
- ↪ Intensify and simplify the collaboration with your partner laboratory

### **What's in it for you**

- ↪ Easy to get started
- ↪ Low to no investment costs
- ↪ Access to modern additive production technology
- ↪ Start with a low investment risk, no hardware purchase required
- ↪ Efficient, precise 3D fabrication without your own printer
- ↪ Connection with an exclusive partner laboratory

### **OUR TIP FOR DENTAL LABORATORIES**

Invite one or more dental practices with whom you collaborate to become a »Creator«.

Your dentist quickly and easily collaborates with you as an exclusive partner laboratory.



## Option 2: **Creator Plus**

### 3D printing without a 3D printer – with a full connection to the DentaMile network

**Especially ideal for**  
**Dentists with intraoral scanners**

#### **A brief overview of the option**

As a »Creator Plus«, you can pass on your scanned patient data to any number of laboratories in the DentaMile network. The laboratories take care of the design and printing.

#### **In detail: What the »Creator Plus« option affords you**

- Work in a validated digital workflow with DentaMile connect
- Benefit from the digital workflow without investing in a 3D printer
- Offer your patients a quick and precise solution
- Reliably, quickly and easily communicate anonymised patient data and STL scan files
- Collaborate with different laboratories of your choosing for the design and printing

#### **What's in it for you**

- Easy to get started
- Low to no investment costs
- Access to modern additive production technology
- Start with a low investment risk, no hardware purchase required
- Efficient, precise 3D fabrication without your own printer
- Establishment of your own production network with an unlimited number of connections to »Designers« and »Producers« in the DentaMile network





## Option 3: **Designer**

### Design on your own – delegate print jobs

#### Especially ideal for

Laboratories or practice laboratories with intraoral scanners or customers who use intraoral scanners

#### A brief overview of the option

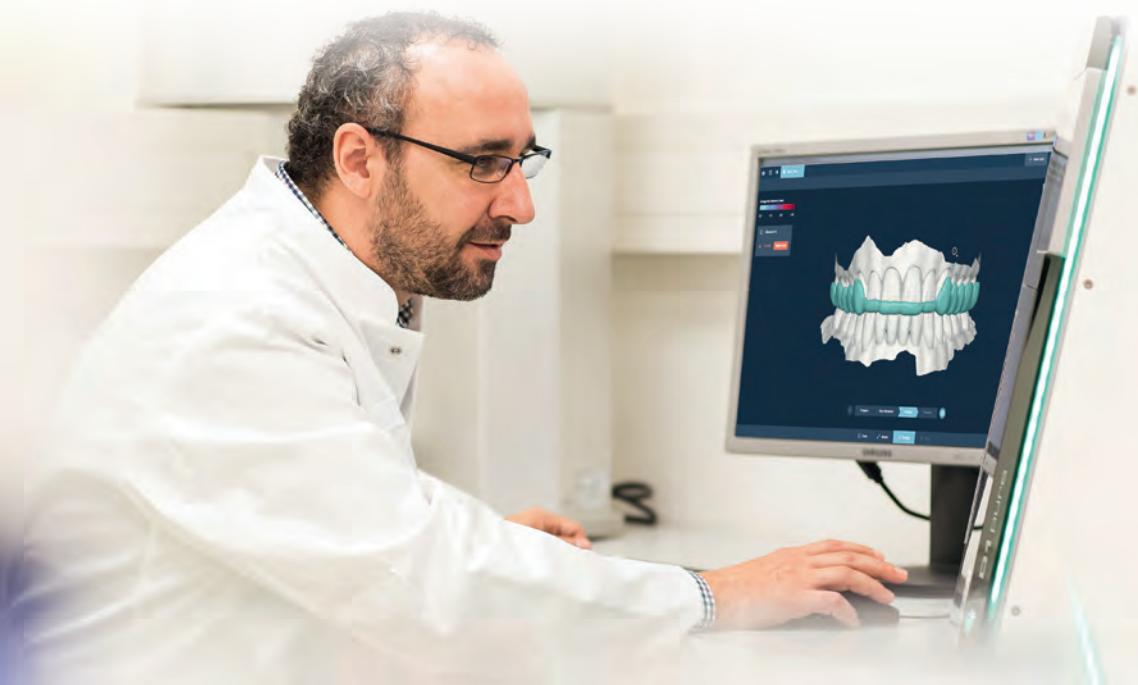
As a »Designer«, you can receive STL files, digitally create objects, such as splints, and delegate the print job to a »Producer« in the DentaMile network. You can connect with other users in the DentaMile network.

#### In detail: What the »Designer« option affords you

- ↗ Work in a validated workflow with DentaMile connect
- ↗ Reliably, quickly and easily receive anonymised patient data and STL scan files
- ↗ Quickly and precisely digitally design the object to be fabricated
- ↗ Benefit from the digital workflow without investing in a 3D printer
- ↗ Have a partner laboratory from the DentaMile connect network perform the 3D printing
- ↗ Be visible in the DentaMile connect network so you can be found by potential clients and partners
- ↗ Provide a Creator option to a partner dentist in order to receive exclusive orders

#### What's in it for you

- ↗ Benefit from added value as part of the DentaMile network
- ↗ Access to modern additive production technology
- ↗ Start with a low investment risk, no hardware purchase required
- ↗ Efficient, precise 3D fabrication without your own printer





# Option 4: **Producer**

## The entire digital workflow in your hands

### **Especially ideal for**

**Dental laboratories or practice laboratories with a focus on in-house fabrication;  
Dentists with a focus on chairside application**

### **A brief overview of the option**

**As a »Producer«, you can perform all of the digital workflow steps yourself with DentaMile connect, from the scan to the object design to printing. You can also connect with any number of other users in the DentaMile network and receive designs and STL scan files.**

### **In detail: What the »Producer« option affords you as a dental technician**

- ↪ Work in a validated workflow with DentaMile connect
- ↪ Reliably, quickly and easily receive anonymised patient data and STL scan files
- ↪ Digitally design and fabricate easily, quickly and precisely
- ↪ Be visible in the DentaMile connect network so you can be found by potential clients and partners
- ↪ Collaborate with laboratories in the DentaMile network
- ↪ Provide the Creator options to partner dentists

### **In detail: What the »Producer« option affords you as a dentist**

- ↪ Work in a validated workflow with DentaMile connect
- ↪ Optimally incorporate DentaMile connect in your own practice workflow
- ↪ Reliably, quickly and easily process anonymised patient data and STL scan files
- ↪ Create designs to fully take advantage of the benefits of your DMG DentaMile hardware for yourself

### **Your advantages as a dental technician and dentist**

- ↪ Utilisation of the full DentaMile added value potential
- ↪ Utilising all network advantages
- ↪ Access to modern additive production technology
- ↪ Efficient, precise 3D fabrication without your own printer for the dentist