



The expert for
pain relief

Flairesse Varnish



Reduce pain for
sensitive teeth.
Flairesse Varnish

Hypersensitivity and **exposed,** **hypersensitive** neck of the tooth?

Practitioners face special challenges when treating patients who suffer from hypersensitivity.

The application of **Flaïresse Varnish** can make a vital difference - and not just to professional tooth cleaning.

The special varnish from the **Flaïresse Prophylaxis** line seals dentin tubules quickly and reliably. It thus helps to desensitise and provides noticeable protection from pain, especially in patients with hypersensitive teeth.

Like all products from the **Flaïresse** family, the varnish contains xylitol in addition to fluoride and is free from added sugars, aspartame and gluten.

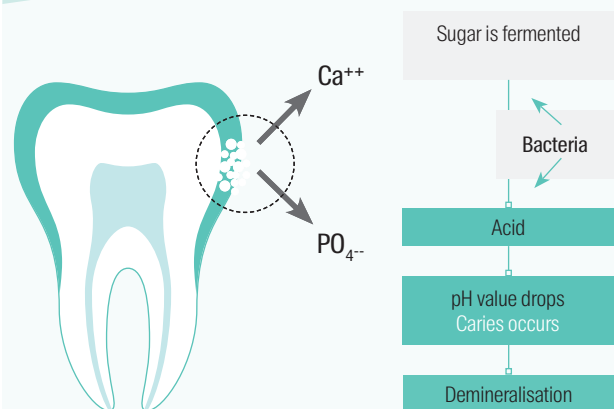
Xylitol protects against bacteria

Flaïresse Varnish contains xylitol. The sugar substitute is antibacterial – a solid benefit as xylitol reduces the cariogenicity of plaque. Its cariostatic and anticariogenic effect has been proven in clinical studies.

The fermentation of sugar causes acid to form, which lowers the pH value and promotes demineralisation. This does not happen in the case of xylitol. Xylitol inhibits the growth and spread of bacteria (including *Streptococcus Mutans*) in the oral cavity. This is because bacteria cannot metabolise the sugar substitute and are therefore unable to cling to the surface of the teeth as biofilm.

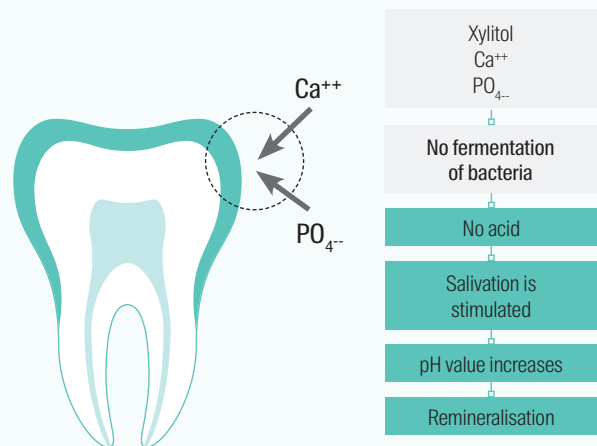
Acid formation is inhibited while saliva production, which increases the pH value, is stimulated. This promotes remineralisation, and minerals such as calcium and phosphate are embedded in the enamel.

How tooth decay occurs



Acid affects the enamel. It causes minerals to dissolve. The structure of enamel becomes unstable. Caries occurs.

The effect of xylitol



Xylitol inhibits the bacteria in their production of acid. The pH value increases and the enamel is remineralised.

Fluoridation with long-term effect

When demineralisation occurs, acid attacks dissolve minerals from the tooth substance.

The crystal structure becomes porous. Targeted remineralisation involves fluoride, calcium and phosphate from the saliva being embedded in the demineralised crystal structure. Fluorapatite is formed, which is more resistant to acid than hydroxylapatite.

However, the concentration of minerals available in the saliva is often very low. This is where topical fluoride application, which plays a key role in caries prevention, can help.

Varnishes containing fluoride prevent the loss of minerals from the hard tooth tissue

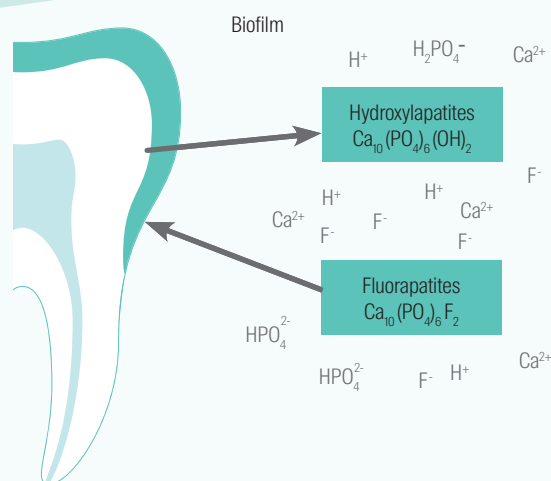
Applying varnishes containing fluoride can sustainably reduce mineral loss in the tooth substance and promote the formation of local calcium fluoride reserves.

Unlike fluoride toothpaste, mouthwash or fluoride gel, the varnish is applied exclusively by the dental treatment team and is thus not reliant on patient compliance. Other advantages include the targeted, simple application method and the prolonged release of fluoride (slow release).

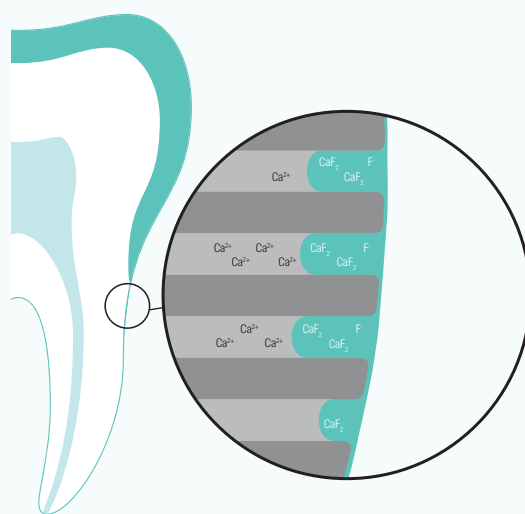
For children and young people, fluoride varnish should be applied twice a year, regardless of any other broad-based fluoride that has been administered. If the caries risk is elevated, varnish application is advisable once every three months.

Flairesse Varnish has a fluoride concentration of 22,600 ppm, which makes it perfect for application in caries risk patients and for intensive fluoridation.

How demineralisation and remineralisation work



Acid attacks cause minerals to be dissolved out of the tooth substance. Targeted remineralisation causes calcium, phosphate and fluoride to be embedded back in. An acid-resistant fluorapatite forms.



Flairesse varnish reliably penetrates into the dentin tubules, securely sealing the dentin.

One varnish – many possibilities

Local fluoridation is an integral part of dental treatment and prophylaxis. With **Flairesse Varnish** you can cover the entire range of topical fluoride administration.

Alongside the anti-caries effect, it allows exposed dentin surfaces to be sealed, thereby reducing hypersensitivity.

Even after preparations have been completed, the varnish application enables reliable sealing of the dentin tubules.



Flairesse Varnish is colourless and is thus also perfect for use in aesthetically demanding regions.



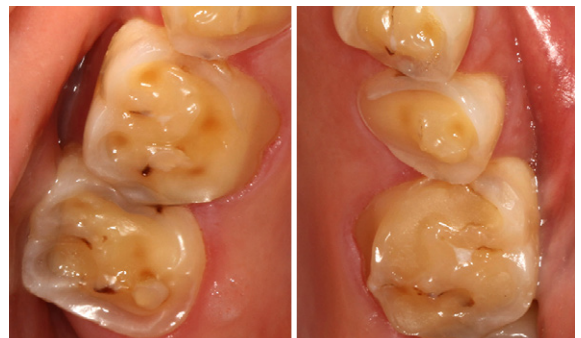
Abrasion causes enamel to wear away, exposing the dentin. Flairesse varnish is ideal for sealing dentin tubules to prevent this process or to provide relief for the patient.



Hypersensitivity can often result in a high level of suffering for the patient. Flairesse varnish makes it possible to reduce the scale of the hypersensitivity.



Exposed cervical areas are often highly sensitive to pain. In such cases, the desensitising effect of Flairesse Varnish can help.



Erosive tooth substance defects can cause dentin regions to become exposed. These regions are often sensitive to pain. Flairesse Varnish strengthens and protects the attacked tooth substance and minimises the occurrence of hypersensitivity.

Advantages for professional prophylaxis

Outstanding aesthetics

Patients are becoming more demanding. Dental treatment should ideally meet aesthetic demands as well as fulfilling health requirements.

Flairesse Varnish is able to meet both: The clear varnish is not visible on the teeth.

Pleasant flavour

Prophylaxis is a matter of taste. **Flairesse Varnish** is available in the variants »Mint« and »Melon«. Both have a pleasantly refreshing taste without being perceived as too intense or »artificial«.

This increases acceptance on the part of the patient. The varnish is also free from added sugars.



Good reasons

- Desensitises reliably
- Contains xylitol and fluoride (22,600 ppm)
- Invisible on teeth
- Easy to use
- Two fresh flavours: mint and melon



An integrated approach to prophylaxis

Flairesse Varnish varnish is part of a product family comprising four specialist products for various tasks. The individual components build on one another and together they cover, step-by-step, the entire process of a professional tooth cleaning prophylaxis. In addition to the varnish, the Flairesse range includes a paste for removing plaque and stains.

It is available in three degrees of abrasion and two different application forms.

The Flairesse line also includes other typical fluoride products:

Flairesse Gel and Flairesse Foam.

Both have a fluoride concentration of 12,300 ppm. Children particularly enjoy the foam's pleasant, airy mouthfeel.

The stability of the foam also reduces the risk of the material being swallowed accidentally.



Product overview

Flairesse

Varnish	35 Single-use units @ 0.4 ml	Mint	REF 220404	Melon	REF 220405		
Foam	1 Dose @ 125 g	Mint	REF 220408	Melon	REF 220409	Strawberry	REF 220410
Gel	1 Bottle @ 480 ml	Mint	REF 220411	Melon	REF 220412	Strawberry	REF 220413
Paste	200 Single-use units @ 1.8 g, 1 proph ring	Mint fine	REF 220414				
		Mint medium	REF 220415				
		Mint coarse	REF 220416				
	1 Tube @ 75 ml	Mint fine	REF 220417	Melon fine	REF 220423		
		Mint medium	REF 220418	Melon medium	REF 220424		
		Mint coarse	REF 220416	Melon coarse	REF 220425		

A smile ahead
together



DMG

Chemisch-Pharmazeutische Fabrik GmbH

Elbgastraße 248 22547 Hamburg Germany

Fon: +49. (0) 40. 84 006-0 Fax: +49. (0) 40. 84 006-222

info@dmg-dental.com www.dmg-dental.com

www.facebook.com/dmgdental

