



Ecosite. The right composite for every situation

Ecosite Elements · Ecosite One ·
Ecosite Bulk Fill · Ecosite Bond



Ecosite. The right composite for every situation

Simplicity, versatility, reliability and aesthetics – the Ecosite family has it all. Simply create highly aesthetic, natural-looking and long-lasting restorations every time:

- An innovative composite system for the highest aesthetic standards
- An innovative posterior layer composite with one-shade concept
- A bulk fill material for one-step posterior fillings
- A modern adhesive with total freedom

Composite? Ecosite

Discover the modern art of the composite with the top-quality materials in the Ecosite collection.

Ecosite Elements

Fundamental composites – perfect results, amazing simplicity

- With an innovative NC1 material structure
- Intuitive and easy shade selection
- Exceptional handling for maximum safety and precision

Ecosite One

Sets new standards in the field of posterior restorations

- Push-and-Flow effect for excellent handling
- One colour suits all, thanks to the One-Shade colour concept
- Valuable time savings thanks to 3 mm curing depth and 10 second rapid polymerisation

Ecosite Bulk Fill

For quick restorations , without layering, especially in the posterior region

- Reliable curing of 5 mm layers in just 20 seconds
- Any standard VITA shade can be achieved using just one universal shade
- High degree of reliability thanks to minimum shrinkage stress

Ecosite Bond

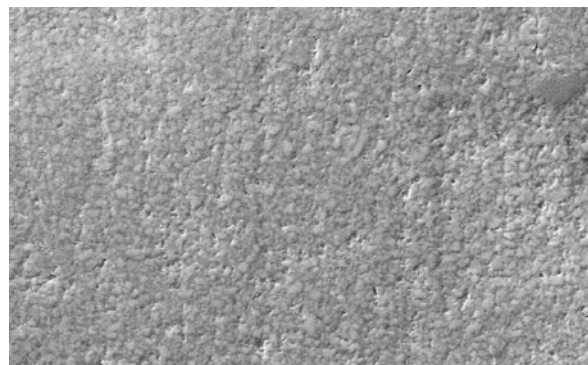
The light-curing universal bond with total freedom

- Modern 1-bottle universal bond
- Freedom of choice when it comes to the etching mode:
Total-etch, selective-etch or self-etch
- Suitable for direct restorations of all cavity classes

Exceptional handling.

Thanks to NC1 technology

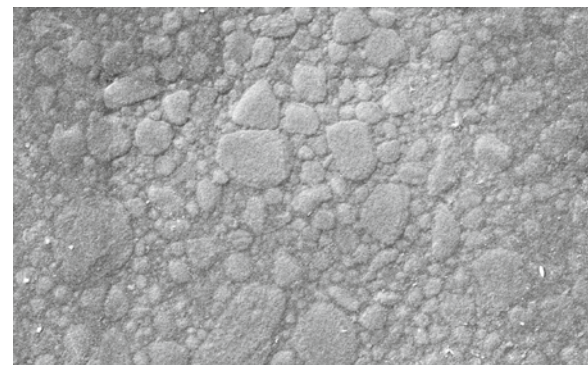
All Ecosite materials feature DMG's unique NC1 (non-clustering) technology. The result: Its mechanical values are fully state of the art and are perfectly suited for the anterior and posterior regions. Thanks to the precision silanisation of the individual filler particles,



Ecosite Elements
2000x magnification

Source: Internal images, DMG, 2018

NC1 technology enables a particularly homogeneous distribution and ensures an optimal working quality, maximum polishability and dazzling results.



Filtek Supreme XTE (3M ESPE)
2000x magnification

The Push-and-Flow effect...

... ensures that the material adapts to the respective requirements depending on the situation. Firm at the outset, it quickly becomes noticeably softer during modeling. This enables an optimal adaptation to the cavity walls and the precise reproduction of anatomical

features. The Push-and-Flow effect also helps you to avoid bubbles or cracks in the often critical contact surfaces between the individual composite increments.

Ecosite One.

Simply matches. Always.

The layered composite resin that works: The Push-and-Flow effect developed by DMG reliably provides a safe and excellent adaptation to the cavity walls as well as flexible sculptability in the occlusal area.

The layered composite resin that makes it simple for you: Save valuable time with posterior tooth restorations. A curing depth of 3 mm and a rapid polymerisation of 10 seconds help you here.

The layered composite resin that always works: Ecosite One uses its One-Shade colour concept to ensure maximum simplicity of shade selection. Thanks to the chameleon effect, just one shade suffices for all typical application cases.

Ecosite One. Optionally available in a 4 g syringe or 0.25 g Safetips.



An easy process for dentists, with great results for patients



The innovative Ecosite One layering composite sets new standards in the field of posterior restorations: The Push-and-Flow effect provides excellent handling. A curing depth of 3 mm and rapid polymerisation within 10 seconds save valuable time, while the One-Shade concept makes one shade possible for all applications – an easy process for dentists, with great results for patients.

Ecosite Elements.

Simply masterful results

Experience the art of perfecting the tried and tested – with its intuitive shade concept, Ecosite Elements offers everything you need to achieve impressive results. Its secret is the intelligent shade combination using a maximum of three modules. It enables natural aesthetic restorations regardless of what technique is used. Intuitive, perfectly practical and at the same time surprisingly efficient.

Maximum variety of combinations and ultra-fast polishing at all times – the separation into three modules provides for an easy combination of shades to achieve perfect results. Depending on the requirements, you can quickly find exactly what you need for work in the anterior or posterior regions. And thanks to the thin coat provided by our highlight shades it couldn't be easier to recreate the individual character of each tooth. For impressive natural restorations.

“DMG's **Ecosite Elements** is a composite system that is both exceptionally easy to handle and makes choosing the right shade a breeze. Ecosite Elements allows the practitioner to create high-quality composite restorations easily.”

Dr Mathias Kühn
Munich, Germany

Application example



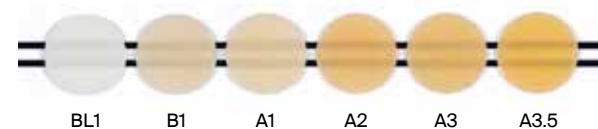
Before

After

Images published with the kind permission of Dr Richard Coates, UK

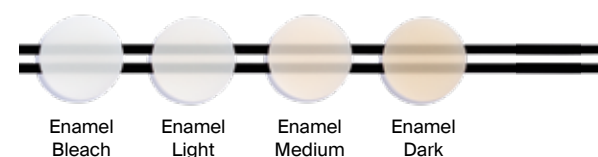
PURE: Five VITA and one Bleach shade

Pure is a universal composite for anterior and posterior regions



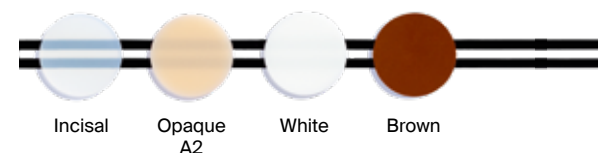
LAYER: Four enamel shades

Layer can be used as an enamel replacement or for the layer technique in combination with Pure



HIGHLIGHT: Four character highlights

Highlight shades for customisation, masking discolourations and fissure sealing



Maximum variety of combinations.

For every shade and every technique

The combination options of the intelligent shade system and its particularly high-quality characteristics enable treatment across the entire range of indications. Whether anterior or posterior teeth, a monochromatic or multi-shade technique – Ecosite Elements always provides an impressive, quick, high-gloss polish and a stunning chameleon effect.

“One of the **Ecosite Elements**' outstanding features is that you only need two materials to create an authentic result that's indistinguishable from a natural tooth. Once treated, our patients tend to be extremely impressed by the fact that the restoration work on their anterior region is virtually undetectable. And there is nothing that could make me happier as a dentist”.

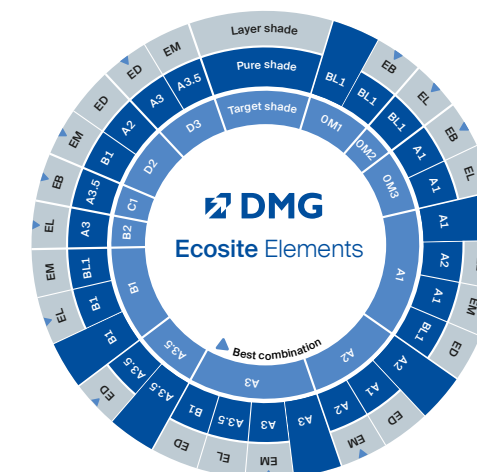
Dr Adelina Stelzer
Berlin, Germany

An overview of all combination options

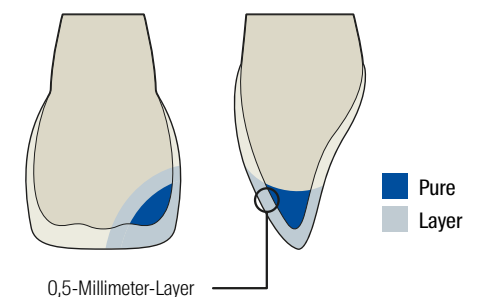
Efficient shade selection with the Shade Guide Layer



The shade wheel links the desired VITA shade with the possible layer combinations



Layering guide



Ecosite Bulk Fill. Reliable posterior fillings – without layering

Quick & easy

5 mm in 20 seconds

Standard restorations in the posterior region couldn't be easier. Ecosite Bulk Fill enables impressive restorations in one straightforward step, without any layering. There is no need for a top layer. The material guarantees reliable and complete curing of 5 mm layers – in just 20 seconds.

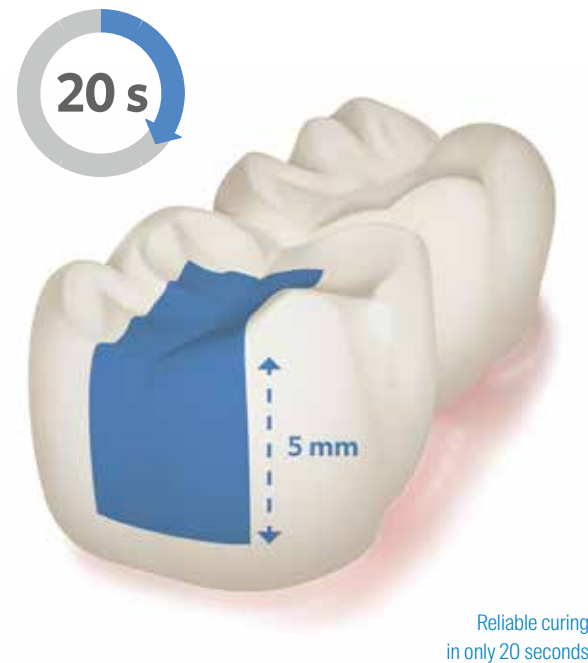
The increased firmness of the packable material ensures straightforward shaping (no “run-off”), reliable contact point formation, significantly reduced reworking – as well as quick and easy post-processing.

Push-and-Flow effect

While very packable, Ecosite Bulk Fill also remains decidedly pliant under shear stress. The result of this Push-and-Flow effect: it makes this material extremely easy to handle, and maximally controlled adaptation of the material to the cavity walls.

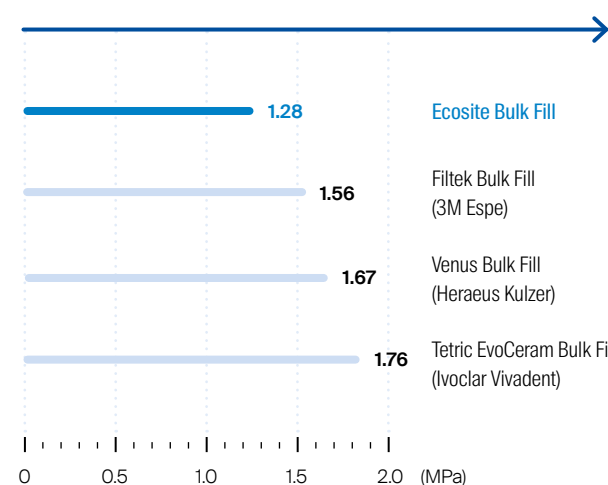
Optimum reliability

The extremely low shrinkage tension values of Ecosite Bulk Fill minimise the shrinkage stress. The nano-hybrid composite also has outstanding mechanical properties. The special NC1 filler technology with a mix of fine glass and nano-fillers makes it possible.



Minimum shrinkage stress

Shrinkage stress



Source: Prototech, 2013

Three shades. Endless possibilities

The Ecosite Bulk Fill shade system couldn't be more intuitive and practical.

- **Universal** delivers on its name and can be used to achieve any conventional VITA shade. Thanks to the chameleon effect, the filling adapts itself optimally to the shade of the surrounding tooth structure.
- **Light**, also featuring the chameleon effect, is the expert when it comes to achieving the highest aesthetic standards for lighter shade tones.
- **Contrast** is your specialist for core build-up and for all purposes where a contrast with the tooth structure is desirable.



Sample teeth with cavities filled with Ecosite Bulk Fill, shade Universal

Ecosite Bond. Adhesive with total freedom

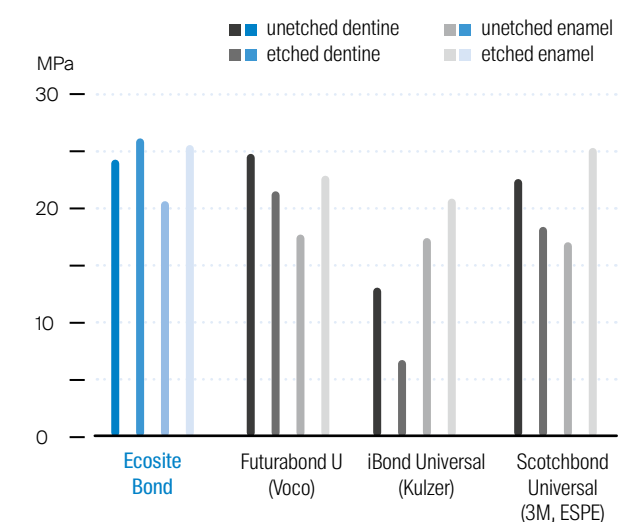
The light-curing 1-bottle universal bond gives you freedom of choice when it comes to etching mode. Total-etch, selective-etch or self-etch? The choice is yours.

The same goes for the indication: The self-etching, selective enamel etching, etch-and-rinse adhesive can be used for direct restorations of all cavity classes with light-curing composite materials.

Be on the safe side.

Regardless of whether a preliminary phosphoric acid etching or quick self-etch mode is used: Ecosite Bond demonstrates excellent bonding properties in any situation – on both enamel and dentine.

Bonding to enamel and dentine



Source: Internal measurements under ISO 29022, DMG, 2017

Maximal efficiency from a holistic perspective.

That is why the various modules of Ecosite Elements have been reduced to the essentials and designed to complement one another perfectly. Together with the exceedingly user-friendly Ecosite Bulk Fill, Ecosite One and Ecosite Bond, this collection offers a modern system for a wide range of indications and any filling task. The ultimate in simplicity and efficiency.

The Ecosite collection offers more than just the materials. The practice organiser system insert fits in a drawer and provides an overview, making it easy for you to find what you need quickly. The Ecosite Elements shade modules – Pure, Layer and Highlight – are accompanied by Ecosite Bulk Fill, Ecosite Bond, DMG Etching Gel and various accessories.

Our Safetip Dispenser Pro has been ergonomically optimised and is uncompromisingly user-friendly.



Ecosite – simple and efficient to keep you in control



The Ecosite collection. At a glance

Product overview

Ecosite Elements

Modules:

Pure

Starter pack Pure, 5 syringes @ 4 g (B1, A1, A2, A3, A3.5)	REF 220860
Starter pack Pure, 5 x 16 Safetips @ 0.25 g (B1, A1, A2, A3, A3.5)	REF 220861

Layer

Starter pack Layer, 4 syringes @ 4 g (Enamel Bleach, Enamel Light, Enamel Medium, Enamel Dark)	REF 220874
Starter pack Layer, 4 x 16 Safetips @ 0.25 g (Enamel Bleach, Enamel Light, Enamel Medium, Enamel Dark)	REF 220879

Highlight

Starter pack Highlight, 4 syringes @ 2 g (Incisal, A2 Opaque, White, Brown)	REF 220889
---	------------

Ecosite Elements Refill pack:

1 Syringe @ 4 g, Bleach 1	REF 220840
1 Syringe @ 4 g, B1	REF 220845
1 Syringe @ 4 g, A1	REF 220841
1 Syringe @ 4 g, A2	REF 220842
1 Syringe @ 4 g, A3	REF 220843
1 Syringe @ 4 g, A3.5	REF 220844
1 Syringe @ 4 g, Enamel Bleach	REF 220870
1 Syringe @ 4 g, Enamel Light	REF 220871
1 Syringe @ 4 g, Enamel Medium	REF 220872
1 Syringe @ 4 g, Enamel Dark	REF 220873
1 Syringe @ 2 g, Incisal	REF 220885
1 Syringe @ 2 g, A2 Opaque	REF 220886
1 Syringe @ 2 g, White	REF 220887
1 Syringe @ 2 g, Brown	REF 220888
16 Safetips @ 0.25 g, Bleach 1	REF 220850
16 Safetips @ 0.25 g, B1	REF 220855
16 Safetips @ 0.25 g, A1	REF 220851
16 Safetips @ 0.25 g, A2	REF 220852
16 Safetips @ 0.25 g, A3	REF 220853
16 Safetips @ 0.25 g, A3.5	REF 220854
16 Safetips @ 0.25 g, Enamel Bleach	REF 220875
16 Safetips @ 0.25 g, Enamel Light	REF 220876
16 Safetips @ 0.25 g, Enamel Medium	REF 220877
16 Safetips @ 0.25 g, Enamel Dark	REF 220878

Ecosite Bulk Fill

Packaging:

1 Syringe @ 4 g, Light	REF 220752
1 Syringe @ 4 g, Universal	REF 220753
1 Syringe @ 4 g, Contrast	REF 220754
16 Safetips @ 0.25 g, Light	REF 220755
16 Safetips @ 0.25 g, Universal	REF 220756
16 Safetips @ 0.25 g, Contrast	REF 220757

Ecosite One

Packaging:

1 Syringe @ 4 g	REF 220900
16 Safetips @ 0.25 g	REF 220901



Ecosite Bond

1 Bottle @ 5 ml Ecosite Bond	REF 220758
------------------------------	------------

Accessories:

1 Safetip Dispenser Pro	REF 220829
20 Luer-Lock Tips Silver	REF 220712
1 Ecosite Elements Shade Guide Bleach 1	REF 220836
1 Ecosite Elements Shade Guide Layer	REF 220835
1 Ecosite Elements drawer insert	REF 220834
2 Syringes @ 2 ml DMG Etching Gel	REF 212873



More info at:
www.dmg-dental.com/composite-en

A smile ahead
together



DMG

Chemisch-Pharmazeutische Fabrik GmbH

Elbgaustraße 248 22547 Hamburg Germany

Fon: +49. (0) 40. 84 006-0 Fax: +49. (0) 40. 84 006-222

info@dmg-dental.com www.dmg-dental.com

www.facebook.com/dmgdental

